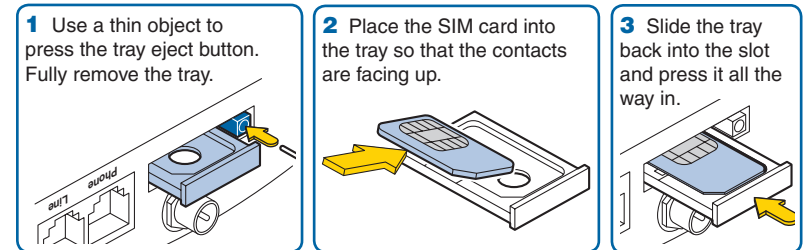


This quick start guide will help you to set up, switch on and begin using your fixed cellular terminal unit. For further information on all features, please refer to the full user guide available within the 'download section' at:

www.burnsidetelecom.com or www.burnsidetelecom.co.uk

Insert your SIM card

Note: Ensure that the unit is switched off before inserting your SIM card. Insertion is most easily achieved with the unit carefully placed upside down.



SIM and Terminal PIN codes: The unit has its own Terminal PIN code which is different from the PIN code used by your SIM card. The Terminal PIN is used for certain control menu options and security procedures related directly to the unit rather than the SIM card.

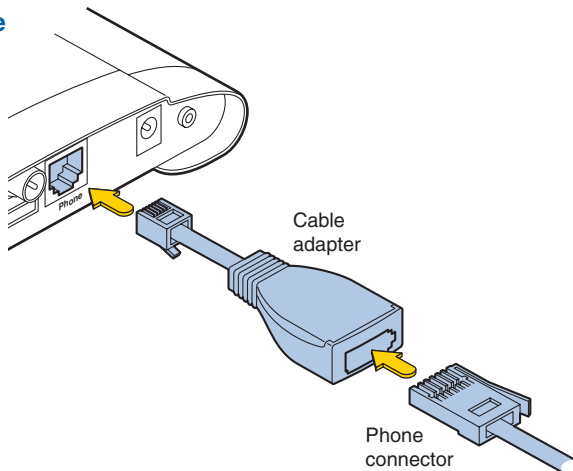
Position the unit

Place the unit in a suitable location, but not directly next to your telephone and at least one metre from the intended antenna position, in order to avoid interference. You will also need close access to a mains power socket.

continued

Connect a telephone

- 1 Connect the supplied cable adapter to the socket on the rear panel, labelled 'Phone'. Your phone may have a connector that fits directly into the unit's 'Phone' socket, in which case the adapter is not needed.
- 2 Connect your standard telephone to the cable adapter.



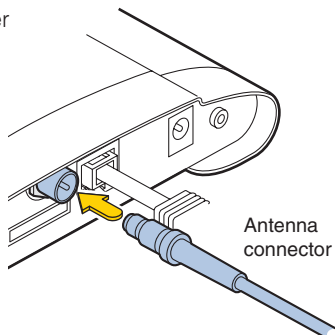
Connect the magnetic mount antenna

- 1 Assemble the antenna by screwing the upper section into the base until it is finger tight.
- 2 Position the antenna where required, if possible on a secure metal surface.

Note: Keep the antenna base away from monitor screens, televisions, credit cards or any device affected by magnetism.

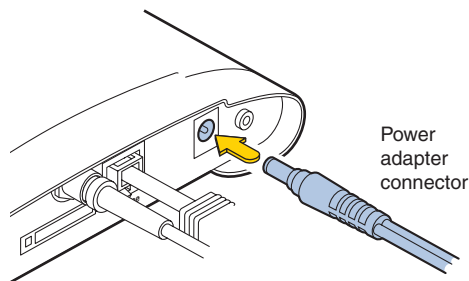
- 3 Feed the antenna cable to the rear of the unit, insert the connector into the antenna socket and twist the collar until finger tight.

Note: Ensure that the cable does not cause a trip hazard.



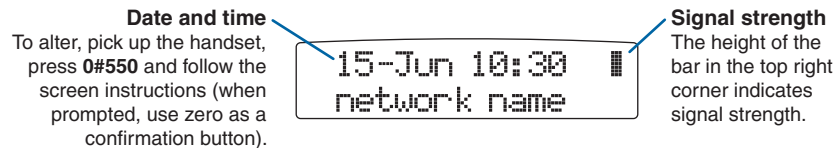
Connect power

- 1 Attach the connector from the power adapter to the socket on the far right of the rear panel.
- 2 Plug the power adapter into a nearby mains outlet. The unit will begin operation as soon as power is applied.



Basic operation

Once connected, powered on and ready to operate, the unit will show the time, date, the name of the current network and an indication of the signal strength:



To make a call, lift the handset and dial the number as usual.

To make international calls, lift the handset and press the zero button until '+' is displayed, then enter the standard country code.

Using the menu

Lift the handset and press **0#** on the keypad to enter the menu. You can then:

- Navigate the menu using these control keys:
***** to go back/up; **#** to go down/forward; **0** to enter/confirm
- Or enter a code to reach a particular menu item:

- | | |
|---------------------------------|----------------------------------|
| 1 Phonebook | 4 Divert & forward |
| 1 Search | 1 Mobile network divert |
| 2 Add entry | 5 Settings |
| 3 Edit | 1 Terminal settings |
| 4 Status | 2 Phone settings |
| 5 Erase | 3 Network settings |
| 2 Messages | 4 Input/Output settings |
| 1 Write message | 5 Set clock |
| 2 Inbox | 6 Special function |
| 3 Outbox | 1 Lock outgoing calls |
| 4 Message settings | 2 Lock menu functions |
| 3 Call register (mobile) | 3 Monitor inputs |
| 1 Missed | 4 Disconnect from network |
| 2 Received | 8 Help |
| 3 Dialed | |
| 4 Erase list | |

For full details of all menu options, please see the full user guide.